

## Let' See Who We Are?

Solar3s, as a leading supplier in New Energy, our prioritized goal is to keep developing and producing high quality and high efficiency product

[As a leading Solar New Energy Supplier from China, our prioritized goal is to keep developing and producing high quality and high efficiency product OEM ODM]

## 3S – Standard & Service & Solution



**24**  
Years  
Experience



**200+**  
Countries  
Export to



**300+**  
Staff  
Solaring Team



**\$50million**  
Annual  
export



**4**  
Office  
CN, DE, HU

## PRODUCT CATALOG

- 1 : Solar Panel
- 2 : Wind-Solar Hybrid System
- 3 : Micro-Inverter
- 4 : Energy Storage Battery
- 5 : Car Charger

### Address:

34th Floor, Evergrande Center, No. 77 Zhongshan West Road, Shijiazhuang China.  
0086-31168072747 [info@solar3s.com](mailto:info@solar3s.com)

Building 5, No 59 Xibei, Luxiang, Jinshan, Shanghai, China.  
0086-13780077983 [info@lin-joy.com](mailto:info@lin-joy.com)

Kritenburg 17, 22319 Hamburg Germany  
0049-17623329290 [lijuncao@sysplendor.com](mailto:lijuncao@sysplendor.com)

Budapest district 22 Hungary  
36706661440 [tibor@3shungary.com](mailto:tibor@3shungary.com)

## About Us

3S Group - Solar3s - Founded by Mr. Tao Song with a startup of manufacturing and trading in Clothing and Apparels since 1998, Over 20 years flourishing development, Solar energy came into our second territories in 2018, A widely recognized sunrising engagement, we are providing professional, reliable and trustful solar products and solar solution, The world needs to be powered Clean and Natural, we are right here working with drive and enthusiasm.

## Our Solution



Solar Panel



Car Charger



Solar Inverter



Energy Storage Battery



Wind-Solar Hybrid System



# Solar Panel



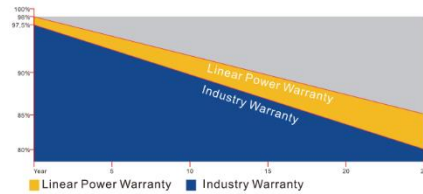
**MSD450-600W**  
Mono Half-cut Single/Double Glass Module  
450-600/MB Series

## Solar module features

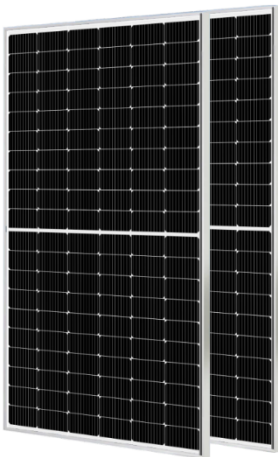
- Multi Busbar Technology**  
Better light trapping and current collection to improve, Effectively improve the module's power output and reliability.
- Higher output power**  
Module output power increased to 505W.
- Low light performance**  
The special solar cell technology has excellent low light power generation performance.
- Better resistance to hot spots**  
The use of half cell structure and special circuit design is less shade loss, with better temperature coefficient and thermal spot resistance ability.
- Adaptability to harsh environments**  
High performance materials are suitable for coastal, farm, desert and other harsh environmental conditions, glass surface is anti-reflective and easy to clean, minimizing power generation losses caused by dirt and dust.

### First-class Quality Assurance

- 10-year warranty for material and technology
- 25-year linear power output warranty



## Module Picture



**MSD450M-120**  
Mono Half-cut Single/Double Glass Module  
430-455/MB Series

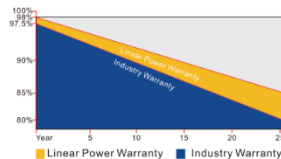
**INTRODUCTION**  
MONO half-cut single /double glass module, assembled with multi-busbar PERC technique and half-cut structure, which can not only absorb the energy from the front of the module, but also absorb the reflected light and the scattered light from the back, offer the advantages of higher power output, reduce shading effect on the energy generation, enhance the mechanical load bearing capacity as well.

### LCOE save 6-8%

- 16% Saving logistics cost
- 17% Saving cable cost
- 16% Saving bracket cost
- 16% Saving labor cost

### First-class Quality Assurance

- 10-year warranty for material and technology
- 25-year linear power output warranty

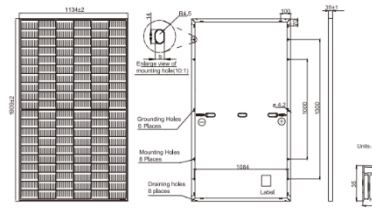


### Comprehensive Certificates

- IEC61215, IEC61730
- ISO9001:2015 Quality management systems
- ISO45001: Environmental management systems
- ISO45001:2018 Occupational health and safety management systems



## Mechanical Diagrams



## Specifications

Solar Cell(Type/Size)	MONO(182mm)
Solar Cells Number	120pcs(6*10)
Dimensions	1909*1134*35mm
Weight	23.9Kg/Pcs
Structure	3.2 Glass + EVA film + Back
Frame	Anodized Aluminum Alloy
Junction Box	IP68E3 Bypass Diode
Cable Cross Section Size	4.0mm² (+)300mm(-)400mm
Mechanical Load	Front 5400Pa/Back 2400Pa
Packing Number	31Pcs/Pallet
Packing Volume	2.834Cbm/Pallet
40'HQ Container	744Pcs

### Electrical Parameters at STC

Module Type	MSD430P	MSD435P	MSD440P	MSD445P	MSD450P	MSD455P
Rate Maximum Power( Pmax/W)	430	435	440	445	450	455
Module Efficiency(%)	19.90	20.10	20.30	20.60	20.80	21.10
Open Circuit Voltage(Voc/V)	40.65	40.80	40.95	41.10	41.25	41.40
Short Circuit Current(Isc/A)	13.59	13.67	13.74	13.82	13.89	13.97
Voltage at Pmax(Vmp/V)	33.89	30.09	34.28	34.48	34.67	34.87
Current at Pmax(Imp/A)	12.69	12.77	12.84	12.91	12.98	13.05
Power Tolerance	0~+5W					
Temperature Coefficient of Isc	+0.046%/°C					
Temperature Coefficient of Voc	-0.276%/°C					
Temperature Coefficient of Pmax	-0.350%/°C					
STC	Irradiance 1000W/m² Cell Temperature 25°C AM1.5					

Remark: Electrical data in this catalogue does not refer to a single module, and it's not part of the offer. It only serves for the comparison among different module types.

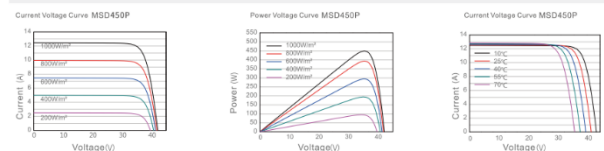
### Electrical Parameters at NOCT

Module Type	MSD430P	MSD435P	MSD440P	MSD445P	MSD450P	MSD455P
Rate Maximum Power( Pmax/W)	327	330	333	336	340	343
Open Circuit Voltage(Voc/V)	38.15	38.28	38.40	38.53	38.65	38.77
Short Circuit Current(Isc/A)	10.91	10.95	10.99	11.03	11.08	11.12
Voltage at Pmax(Vmp/V)	31.89	32.05	32.19	32.35	32.51	32.67
Current at Pmax(Imp/A)	10.26	10.30	10.35	10.40	10.46	10.51
NOCT-Irradiance 800W/m² Ambient Temperature 20°C Wind at 1m/s AM1.5						

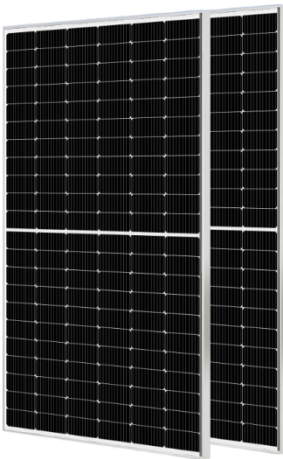
### Operating Conditions

Operating Temperature	-40~+85°C
Maximum System Voltage	1500VDC
NOCT	45±2°C
Fireproof Performance	Glass C
Maximum Series Fuse	25A
Temperature Coefficient of Voc	-0.276%/K
Temperature Coefficient of Isc	+0.046%/K

### Characteristics



### Module Picture



## MSD500M-132

Mono Half-cut Single/Double Glass Module  
480-505/MB Series

#### INTRODUCTION

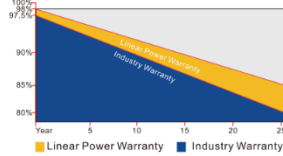
MONO half-cut single / double glass module, assembled with multi-layers PERC technique and half-cut structure, which can not only absorb the energy from the front of the module, but also absorb the reflected light and the scattered light from the back, offer the advantages of higher power output, reduce shading effect on the energy generation, enhance the mechanical load bearing capacity as well.

### LCOE save 6-8%

- 19% Saving logistics cost
- 17% Saving cable cost
- 19% Saving bracket cost
- 19% Saving labor cost

#### First-class Quality Assurance

- 10-year warranty for material and technology
- 25-year linear power output warranty

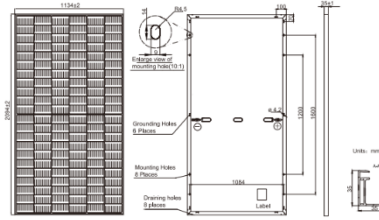


#### Comprehensive Certificates

- IEC61215, IEC61730
- ISO9001:2015 Quality management systems
- ISO45001:2018 Occupational health and safety management systems
- ISO45001:2018 Environmental management systems



### Mechanical Diagrams



\*If frame color and cable length can be customized.

#### Electrical Parameters at STC

Module Type	MSD480P	MSD485P	MSD490P	MSD495P	MSD500P	MSD505P
Rate Maximum Power (Pmax/W)	480	485	490	495	500	505
Module Efficiency (%)	20.20	20.40	20.60	20.80	21.10	21.30
Open Circuit Voltage(Voc/V)	45.02	45.18	45.33	45.49	45.65	45.79
Short Circuit Current(Isc/A)	13.66	13.73	13.79	13.86	13.92	13.99
Voltage at Pmax(Vmp/V)	37.71	37.87	38.02	38.18	38.33	38.50
Current at Pmax(Imp/A)	12.73	12.81	12.89	12.97	13.05	13.12
Power Tolerance	0~+5w					
Temperature Coefficient of Isc	+0.046%/°C					
Temperature Coefficient of Voc	-0.276%/°C					
Temperature Coefficient of Pmax	-0.350%/°C					
STC	Irradiance 1000W/m <sup>2</sup> Cell Temperature 25°C AM1.5					

Remark: Electrical data in this catalogue does not refer to a single module, and it's not part of the offer. It only serves for the comparison among different module types.

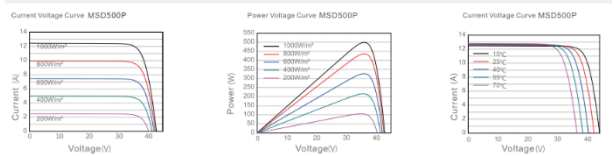
#### Electrical Parameters at NOCT

Module Type	MSD480P	MSD485P	MSD490P	MSD495P	MSD500P	MSD505P
Rate Maximum Power (Pmax/W)	363	366	370	373	377	381
Open Circuit Voltage(Voc/V)	42.16	42.31	42.46	42.60	42.75	42.89
Short Circuit Current(Isc/A)	10.98	11.06	11.12	11.19	11.26	11.33
Voltage at Pmax(Vmp/V)	35.48	35.61	35.73	35.86	35.99	36.11
Current at Pmax(Imp/A)	10.23	10.28	10.36	10.41	10.48	10.56
NOCT: Irradiance 800W/m <sup>2</sup> Ambient Temperature 20°C Wind at 1m/S AM1.5						

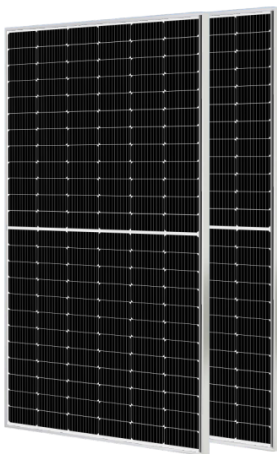
#### Operating Conditions

Operating Temperature	-40~+85°C
Maximum System Voltage	1500VDC
NOCT	45.2°C
Fireproof Performance	Class C
Maximum Series Fuse	25A
Temperature Coefficient of Voc	-0.276%/K
Temperature Coefficient of Isc	+0.046%/K

#### Characteristics



### Module Picture



## MSD540M-144

Mono Half-cut Single/Double Glass Module  
525-550/MB Series

#### INTRODUCTION

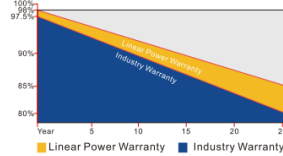
MONO half-cut single / double glass module, assembled with multi-layers PERC technique and half-cut structure, which can not only absorb the energy from the front of the module, but also absorb the reflected light and the scattered light from the back, offer the advantages of higher power output, reduce shading effect on the energy generation, enhance the mechanical load bearing capacity as well.

### LCOE save 6-8%

- 19% Saving logistics cost
- 17% Saving cable cost
- 19% Saving bracket cost
- 19% Saving labor cost

#### First-class Quality Assurance

- 10-year warranty for material and technology
- 25-year linear power output warranty

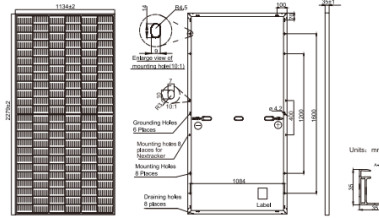


#### Comprehensive Certificates

- IEC61215, IEC61730
- ISO9001:2015 Quality management systems
- ISO45001:2018 Occupational health and safety management systems
- ISO45001:2018 Environmental management systems



### Mechanical Diagrams



\*If frame color and cable length can be customized.

#### Electrical Parameters at STC

Module Type	MSD525P	MSD530P	MSD535P	MSD540P	MSD545P	MSD550P
Rate Maximum Power (Pmax/W)	525	530	535	540	545	550
Module Efficiency (%)	20.30	20.50	20.70	20.90	21.10	21.30
Open Circuit Voltage(Voc/V)	48.95	49.15	49.35	49.55	49.75	49.95
Short Circuit Current(Isc/A)	13.67	13.74	13.82	13.89	13.97	14.05
Voltage at Pmax(Vmp/V)	41.10	41.27	41.45	41.62	41.80	41.97
Current at Pmax(Imp/A)	12.78	12.85	12.91	12.98	13.05	13.11
Power Tolerance	0~+5w					
Temperature Coefficient of Isc	+0.046%/°C					
Temperature Coefficient of Voc	-0.276%/°C					
Temperature Coefficient of Pmax	-0.350%/°C					
STC	Irradiance 1000W/m <sup>2</sup> Cell Temperature 25°C AM1.5					

Remark: Electrical data in this catalogue does not refer to a single module, and it's not part of the offer. It only serves for the comparison among different module types.

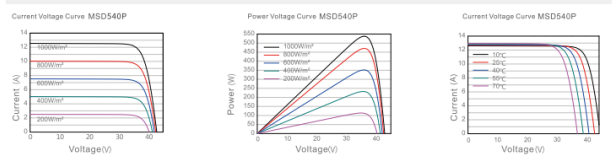
#### Electrical Parameters at NOCT

Module Type	MSD525P	MSD530P	MSD535P	MSD540P	MSD545P	MSD550P
Rate Maximum Power (Pmax/W)	396	400	404	407	411	414
Open Circuit Voltage(Voc/V)	46.00	46.13	46.26	46.38	46.50	46.63
Short Circuit Current(Isc/A)	10.95	10.99	11.03	11.08	11.12	11.17
Voltage at Pmax(Vmp/V)	38.35	38.55	38.76	38.95	39.16	39.31
Current at Pmax(Imp/A)	10.33	10.38	10.43	10.46	10.50	10.53
NOCT: Irradiance 800W/m <sup>2</sup> Ambient Temperature 20°C Wind at 1m/S AM1.5						

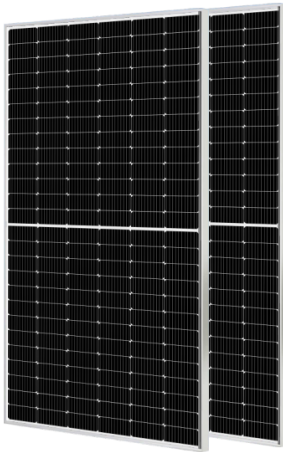
#### Operating Conditions

Operating Temperature	-40~+85°C
Maximum System Voltage	1500VDC
NOCT	45.2°C
Fireproof Performance	Class C
Maximum Series Fuse	25A
Temperature Coefficient of Voc	-0.276%/K
Temperature Coefficient of Isc	+0.046%/K

#### Characteristics



### Module Picture



## MSD600M-156

Mono Half-cut Single/Double Glass Module  
580-600/MB Series

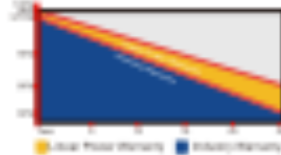
**INTRODUCTION**  
MONO half-cut single / double glass module, assembled with multi-junction PERC technology and half-cut structure, which can not only absorb the energy from the front of the module, but also absorb the reflected light and the scattered light from the back, offer the advantages of higher power output, reduce shading effect on the energy generation, enhance the mechanical load bearing capacity as well.

### LCOE save 6-8%

- 16% Saving logistics cost
- 17% Saving cable cost
- 16% Saving bracket cost
- 19% Saving labor cost

#### Production Quality Assurance

- ISO 9001 certification for industrial production technology
- ISO 14001 environmental management system

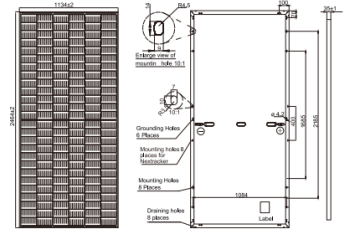


#### Comprehensive Certificates

- ISO 9001:2008
- ISO 14001:2004
- OHSAS 18001
- IEC 61215
- IEC 61730
- UL 1703



### Mechanical Diagrams



PE Frame color and cable length can be customized

#### Electrical Parameters at STC

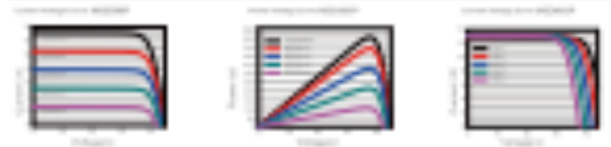
Module Type	MSD580P	MSD585P	MSD590P	MSD595P	MSD600P
Rate Maximum Power (Pmax/W)	580	585	590	595	600
Module Efficiency (%)	20.70	20.90	20.10	21.30	21.50
Open Circuit Voltage(Voc/V)	53.50	53.65	53.80	53.95	54.10
Short Circuit Current(Isc/A)	13.82	13.89	13.96	14.03	14.10
Voltage at Pmax(Vmp/V)	44.90	45.07	45.22	45.39	45.53
Current at Pmax(Imp/A)	12.92	12.98	13.05	13.11	13.18
Power Tolerance	0~+5w				
Temperature Coefficient of Isc	+0.046%/°C				
Temperature Coefficient of Voc	-0.276%/°C				
Temperature Coefficient of Pmax	-0.350%/°C				
STC	Irradiance 1000W/m <sup>2</sup> Cell Temperature 25°C AM1.5				

Remark: Electrical data in this catalogue does not refer to a single module, and it's not part of the offer. It only serves for the comparison among different module types.

#### Electrical Parameters at NOCT

Module Type	MSD580P	MSD585P	MSD590P	MSD595P	MSD600P	Operating Conditions
Operating Temperature	40	40	40	40	40	40~+85°C
Open Circuit Voltage(Voc/V)	53.50	53.65	53.80	53.95	54.10	53.50
Short Circuit Current(Isc/A)	13.82	13.89	13.96	14.03	14.10	13.82
Voltage at Pmax(Vmp/V)	44.90	45.07	45.22	45.39	45.53	44.90
Current at Pmax(Imp/A)	12.92	12.98	13.05	13.11	13.18	12.92
Power at Pmax(Pmax/W)	580	585	590	595	600	580
Module Efficiency (%)	20.70	20.90	20.10	21.30	21.50	20.70

#### Performance



# 40-450 Watt

High efficiency monocrystalline silicon solar modules

0~+3% tolerance

ISO9001:2008, ISO14001:2004, OHSAS18001

Factory certificates

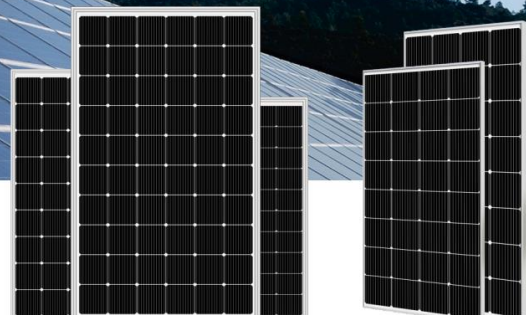
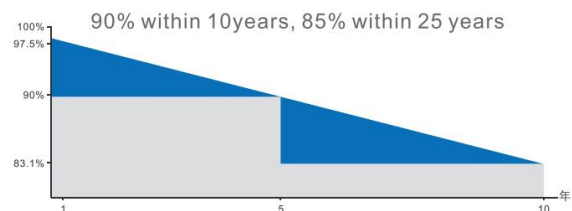
IEC61215, IEC61730, UL1703 Product certificates

PERC 182 Cell 450W

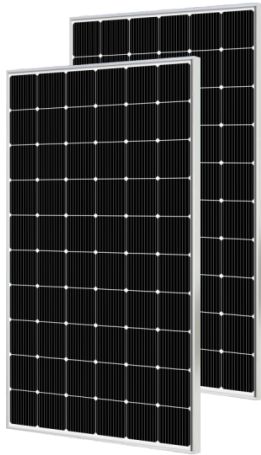
## Solar module features

- PERC 182 cells**  
Better capability of current collection, larger area of power generation, nice appearance, more suitable for installation on the roof.
- High output power**  
Using PERC battery structure technology (Low resistance characteristics), output power of 60pcs monocrystalline cells reaches Max 450W (Highest Conversion efficiency to 20.9%)
- Low light performance**  
Using excellent glass and texture surface making of solar cell, outstanding performance can be obtained in low light condition.
- Adaptability of harsh environment**  
Corrosion tests have certified in high salt fog and high ammonia environment.

## Guaranteed output power



### Module Picture



## SP450M-60

Comprehensive Certificates

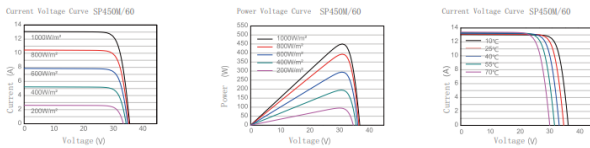
- IEC61215, IEC61730
- ISO9001:2015 Quality management systems
- ISO45001: Environmental management systems
- ISO45001:2018 Occupational health and safety management systems



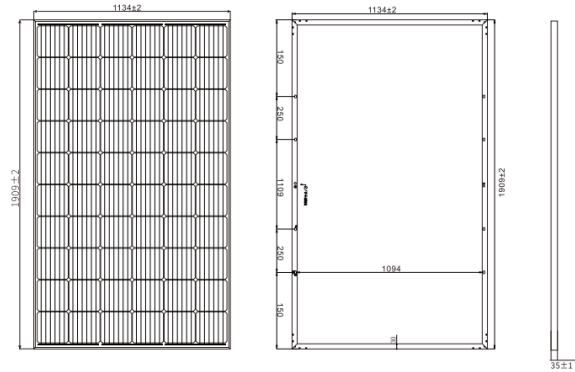
### Electrical Parameters at (STC)

Module	Power (W)	Module Efficiency (%)	Voltage at Pmax (Vmp)	Current at Pmax (Imp)	Open Circuit Voltage (Voc)	Short Circuit Current (Isc)	Power Tolerance (w)
SP450M	450W	20.80%	34.20	13.16	41.04	13.95	±3%

### Characteristics



### Mechanical Diagrams



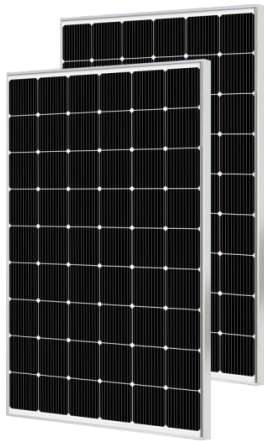
PS: Frame color and cable length can be customized

Mechanical Parameters		Packing	
Solar Cell (Type/Size)	MONO(182mm)	Module Type	SP450M-60
Solar Cells Number	60Pcs(6x10)	Carton Size	1930x1160x85mm
Dimension	1909x1134x35mm	Number	2Pcs/Ctn
Weight	22.9Kg/Pcs	Weight	46Kg/Ctn
Tempered Glass	3.2 mm High Permeability Coated	Volume	0.190Cbm/Ctn
Frame	Anodized aluminum alloy	20GP Container	316Pcs
Junction Box	IP67, 3*bypass diode	40HQ Container	736Pcs
Cable	4.0mm <sup>2</sup> , (+)1000mm(-)1000mm		
Connector	Original MC4/Compatible MC4		
Mechanical Load	Front 5400PA/back 2400PA		

- STC: Light intensity 1000W/m<sup>2</sup>; Battery temperature: 25°C; atmosphere quality=15
- NOCT: Light intensity 800W/m<sup>2</sup>; Battery temperature: 20°C; atmosphere quality=15; wind velocity 1m/s

Final explanation rights reserved

### Module Picture



## SP400M-54

Comprehensive Certificates

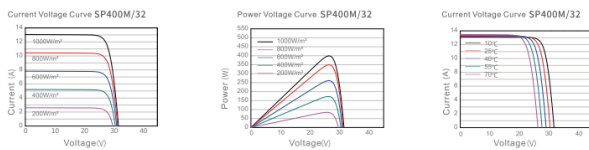
- IEC61215, IEC61730
- ISO9001:2015 Quality management systems
- ISO45001: Environmental management systems
- ISO45001:2018 Occupational health and safety management systems



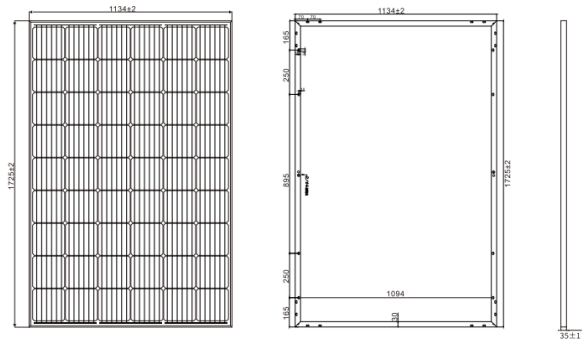
### Electrical Parameters at (STC)

Module	Power (W)	Module Efficiency (%)	Voltage at Pmax (Vmp)	Current at Pmax (Imp)	Open Circuit Voltage (Voc)	Short Circuit Current (Isc)	Power Tolerance (w)
SP400M	400W	20.70%	30.78	13.00	37.02	13.78	±3%

### Characteristics



### Mechanical Diagrams



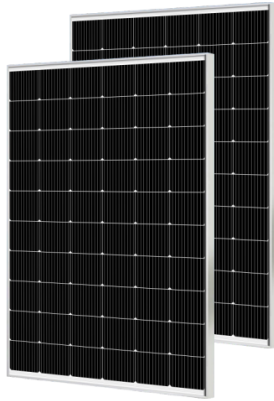
PS: Frame color and cable length can be customized

Mechanical Parameters		Packing	
Solar Cell (Type/Size)	MONO(182mm)	Module Type	SP400M-54
Solar Cells Number	54Pcs(6x9)	Carton Size	1745x1160x85mm
Dimension	1725x1134x35mm	Number	2Pcs/Ctn
Weight	21.3Kg/Pcs	Weight	43Kg/Ctn
Tempered Glass	3.2 mm High Permeability Coated	Volume	0.172Cbm/Ctn
Frame	Anodized aluminum alloy	20GP Container	340Pcs
Junction Box	IP67, 3*bypass diode	40HQ Container	810Pcs
Cable	4.0mm <sup>2</sup> , (+)1000mm(-)1000mm		
Connector	Original MC4/Compatible MC4		
Mechanical Load	Front 5400PA/back 2400PA		

- STC: Light intensity 1000W/m<sup>2</sup>; Battery temperature: 25°C; atmosphere quality=15
- NOCT: Light intensity 800W/m<sup>2</sup>; Battery temperature: 20°C; atmosphere quality=15; wind velocity 1m/s

Final explanation rights reserved

### Module Picture



## SP360M-60

#### Comprehensive Certificates

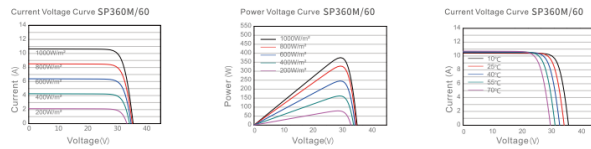
- IEC61215, IEC61730
- ISO9001:2015 Quality management systems
- ISO45001: Environmental management systems
- ISO45001:2018 Occupational health and safety management systems



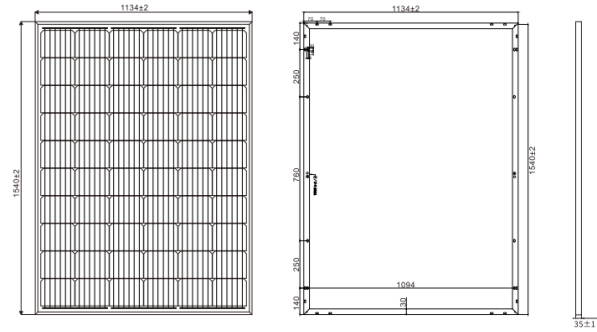
### Electrical Parameters at (STC)

Module	Power (W)	Module Efficiency(%)	Voltage at Pmax(Vmp)	Current at Pmax(Imp)	Open Circuit Voltage(Voc)	Short Circuit Current(Isc)	Power Tolerance(w)
SP360M	360W	20.60%	34.20	10.53A	41.04	11.16	±3%

### Characteristics



### Mechanical Diagrams



PS: Frame color and cable length can be customized

Mechanical Parameters		Packing	
Solar Cell(Type/Size)	MONO(182mm)	Module Type	SP360M-60
Solar Cells Number	60Pcs(6x10)	Carton Size	1560x1160x85mm
Dimension	1540x1134x35mm	Number	2Pcs/Ctn
Weight	18.8Kg/Pcs	Weight	38Kg/Ctn
Tempered Glass	3.2 mm High Permeability Coated	Volume	0.153Cbm/Ctn
Frame	Anodized aluminum alloy	20GP Container	386Pcs
Junction Box	IP67, 3*bypass diode	40HQ Container	902Pcs
Cable	4.0mm <sup>2</sup> , (+)1000mm/(-)1000mm		
Connector	Original MC4/Compatible MC4		
Mechanical Load	Front 5400PA/back 2400PA		

STC: ☀️ Light intensity 1000W/m<sup>2</sup> 🔋 Battery temperature 25°C 🌤️ atmosphere quality=15  
 NOCT: ☀️ Light intensity 800W/m<sup>2</sup> 🔋 Battery temperature 20°C 🌤️ atmosphere quality=15 🌪️ wind velocity 1m/s

Final explanation rights reserved

### Module Picture



## SP300M-60

#### Comprehensive Certificates

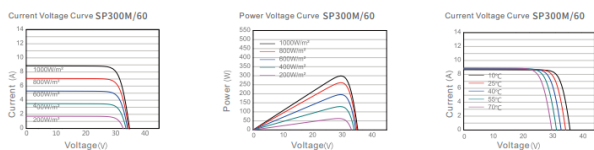
- IEC61215, IEC61730
- ISO9001:2015 Quality management systems
- ISO45001: Environmental management systems
- ISO45001:2018 Occupational health and safety management systems



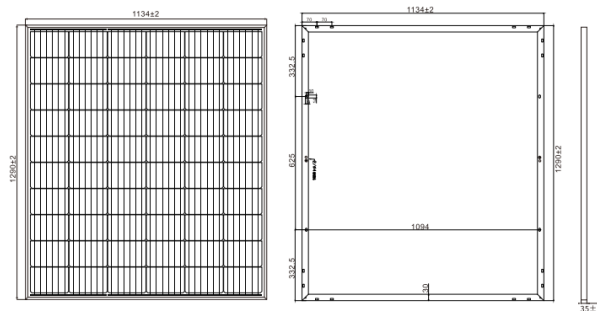
### Electrical Parameters at (STC)

Module	Power (W)	Module Efficiency(%)	Voltage at Pmax(Vmp)	Current at Pmax(Imp)	Open Circuit Voltage(Voc)	Short Circuit Current(Isc)	Power Tolerance(w)
SP300M	300W	20.50%	34.20	8.77	41.04	9.30	±3%

### Characteristics



### Mechanical Diagrams



PS: Frame color and cable length can be customized

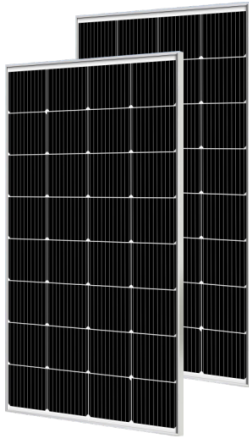
Mechanical Parameters		Packing	
Solar Cell(Type/Size)	MONO(182mm)	Module Type	SP300M-60
Solar Cells Number	60Pcs(6x10)	Carton Size	1310x1160x85mm
Dimension	1290x1134x35mm	Number	2Pcs/Ctn
Weight	14.3Kg/Pcs	Weight	29Kg/Ctn
Tempered Glass	3.2 mm High Permeability Coated	Volume	0.129Cbm/Ctn
Frame	Anodized aluminum alloy	20GP Container	444Pcs
Junction Box	IP67, 3*bypass diode	40HQ Container	1088Pcs
Cable	4.0mm <sup>2</sup> , (+)1000mm/(-)1000mm		
Connector	Original MC4/Compatible MC4		
Mechanical Load	Front 5400PA/back 2400PA		

STC: ☀️ Light intensity 1000W/m<sup>2</sup> 🔋 Battery temperature 25°C 🌤️ atmosphere quality=15  
 NOCT: ☀️ Light intensity 800W/m<sup>2</sup> 🔋 Battery temperature 20°C 🌤️ atmosphere quality=15 🌪️ wind velocity 1m/s

Final explanation rights reserved



### Module Picture



## SP200M-32

### Comprehensive Certificates

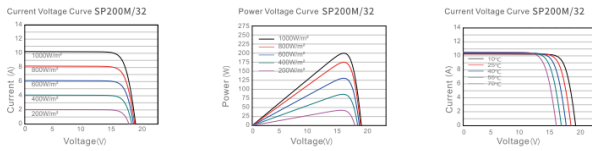
- IEC61215, IEC61730
- ISO9001:2015 Quality management systems
- ISO45001: Environmental management systems
- ISO45001:2018 Occupational health and safety management systems



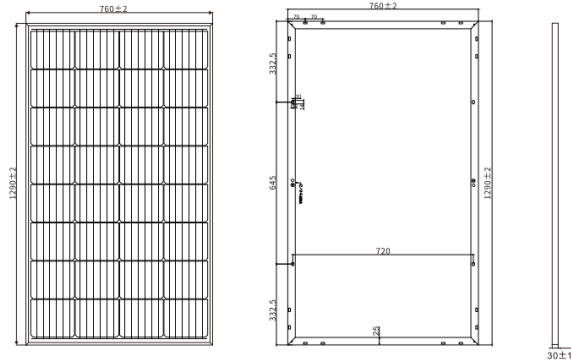
### Electrical Parameters at (STC)

Module	Power (W)	Module Efficiency(%)	Voltage at Pmax(Vmp)	Current at Pmax(Imp)	Open Circuit Voltage(Voc)	Short Circuit Current(Isc)	Power Tolerance(w)
SP200M	200W	20.40%	18.24	10.96	21.80	11.62	±3%

### Characteristics



### Mechanical Diagrams



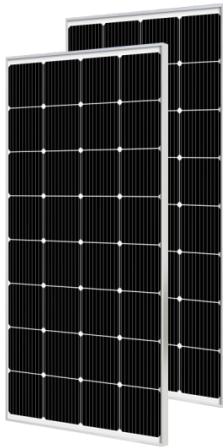
PS: Frame color and cable length can be customized

Mechanical Parameters		Packing	
Solar Cell(Type/Size)	MONO(182mm)	Module Type	SP200M-32
Solar Cells Number	32Pcs(4x8)	Carton Size	1310x780x75mm
Dimension	1290x760x30mm	Number	2Pcs/Ctn
Weight	10.30Kg/Pcs	Weight	21Kg/Ctn
Tempered Glass	3.2 mm High Permeability Coated	Volume	0.077Cbm/Ctn
Frame	Anodized aluminum alloy	20GP Container	784Pcs
Junction Box	IP67.2*bypass diode	40HQ Container	1836Pcs
Cable	2.5mm <sup>2</sup> , (+)700mm/(-)700mm		
Connector	Original MC4/Compatible MC4		
Mechanical Load	Front 5400PA/back 2400PA		

- STC: ☀️ Light intensity 1000W/m<sup>2</sup> 🔋 Battery temperature 25°C 🌤️ atmosphere quality=15
- NOCT: ☀️ Light intensity 800W/m<sup>2</sup> 🔋 Battery temperature 20°C 🌤️ atmosphere quality=15 🌪️ wind velocity 1m/s

Final explanation rights reserved

### Module Picture



## SP240M-32

### Comprehensive Certificates

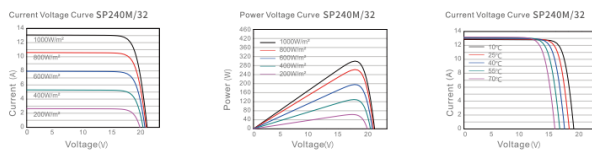
- IEC61215, IEC61730
- ISO9001:2015 Quality management systems
- ISO45001: Environmental management systems
- ISO45001:2018 Occupational health and safety management systems



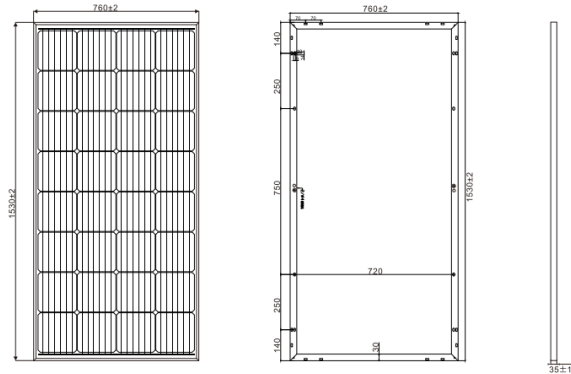
### Electrical Parameters at (STC)

Module	Power (W)	Module Efficiency(%)	Voltage at Pmax(Vmp)	Current at Pmax(Imp)	Open Circuit Voltage(Voc)	Short Circuit Current(Isc)	Power Tolerance(w)
SP240M	240W	20.70%	18.24	13.16	21.80	13.95	±3%

### Characteristics



### Mechanical Diagrams



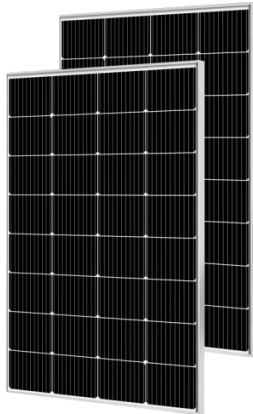
PS: Frame color and cable length can be customized

Mechanical Parameters		Packing	
Solar Cell(Type/Size)	MONO(182mm)	Module Type	SP240M-32
Solar Cells Number	32Pcs(4x8)	Carton Size	1550x780x85mm
Dimension	1530x760x35mm	Number	2Pcs/Ctn
Weight	11.8Kg/Pcs	Weight	24Kg/Ctn
Tempered Glass	3.2 mm High Permeability Coated	Volume	0.100Cbm/Ctn
Frame	Anodized aluminum alloy	20GP Container	532Pcs
Junction Box	IP67.3*bypass diode	40HQ Container	1356Pcs
Cable	4.0mm <sup>2</sup> , (+)1000mm/(-)1000mm		
Connector	Original MC4/Compatible MC4		
Mechanical Load	Front 5400PA/back 2400PA		

- STC: ☀️ Light intensity 1000W/m<sup>2</sup> 🔋 Battery temperature 25°C 🌤️ atmosphere quality=15
- NOCT: ☀️ Light intensity 800W/m<sup>2</sup> 🔋 Battery temperature 20°C 🌤️ atmosphere quality=15 🌪️ wind velocity 1m/s

Final explanation rights reserved

### Module Picture



## SP160M-32

### Comprehensive Certificates

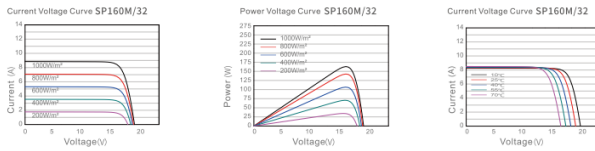
- IEC61215, IEC61730
- ISO9001:2015 Quality management systems
- ISO45001: Environmental management systems
- ISO45001:2018 Occupational health and safety management systems



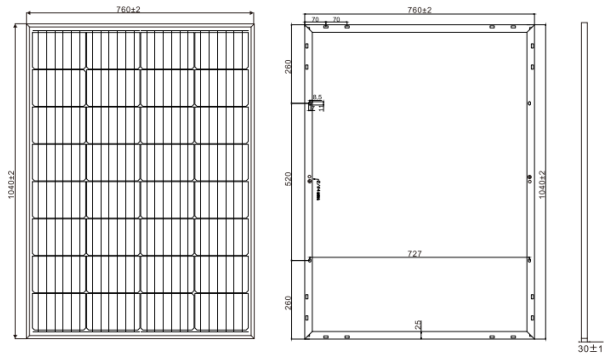
### Electrical Parameters at (STC)

Module	Power (W)	Module Efficiency(%)	Voltage at Pmax(Vmp)	Current at Pmax(Imp)	Open Circuit Voltage(Voc)	Short Circuit Current(Isc)	Power Tolerance(w)
SP160M	160W	20.20%	18.24	8.77	21.80	9.30	±3%

### Characteristics



### Mechanical Diagrams



PS: Frame color and cable length can be customized

#### Mechanical Parameters

Solar Cell(Type/Size)	MONO(182mm)
Solar Cells Number	32Pcs(4x8)
Dimension	1040x760x30mm
Weight	8.30Kg/Pcs
Tempered Glass	3.2 mm High Permeability Coated
Frame	Anodized aluminum alloy
Junction Box	IP67, 2*bypass diode
Cable	2.5mm <sup>2</sup> , (+)700mm/(-)700mm
Connector	Original MC4/Compatible MC4
Mechanical Load	Front 5400PA/back 2400PA

#### Packing

Module Type	SP160M-32
Carton Size	1060x780x75mm
Number	2Pcs/Ctn
Weight	17Kg/Ctn
Volume	0.062Cbm/Ctn
20GP Container	984Pcs
40HQ Container	2280Pcs

- STC: Light intensity 1000W/m<sup>2</sup> Battery temperature 25°C atmosphere quality=15
- NOCT: Light intensity 800W/m<sup>2</sup> Battery temperature 20°C atmosphere quality=15 wind velocity 1m/s

Final explanation rights reserved

### Module Picture



## SP120M-32

### Comprehensive Certificates

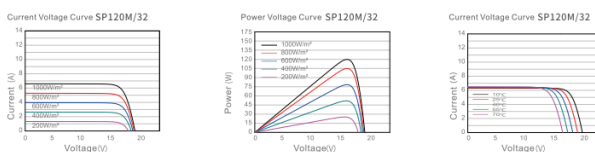
- IEC61215, IEC61730
- ISO9001:2015 Quality management systems
- ISO45001: Environmental management systems
- ISO45001:2018 Occupational health and safety management systems



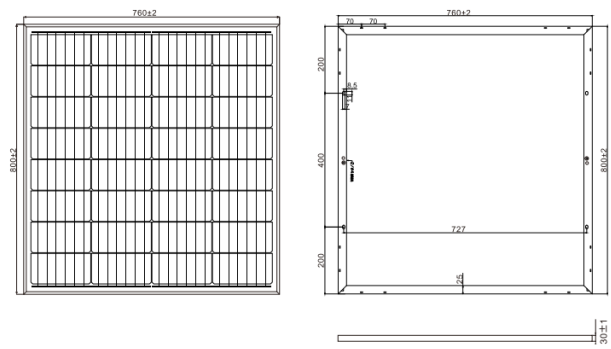
### Electrical Parameters at (STC)

Module	Power (W)	Module Efficiency(%)	Voltage at Pmax(Vmp)	Current at Pmax(Imp)	Open Circuit Voltage(Voc)	Short Circuit Current(Isc)	Power Tolerance(w)
SP120M	120W	19.70%	18.24	6.58	21.80	6.97	±3%

### Characteristics



### Mechanical Diagrams



PS: Frame color and cable length can be customized

#### Mechanical Parameters

Solar Cell(Type/Size)	MONO(182mm)
Solar Cells Number	32Pcs(4x8)
Dimension	800x760x30mm
Weight	7.30Kg/Pcs
Tempered Glass	3.2 mm High Permeability Coated
Frame	Anodized aluminum alloy
Junction Box	IP67, 1*bypass diode
Cable	2.0mm <sup>2</sup> , (+)500mm/(-)500mm
Connector	Original MC4/Compatible MC4
Mechanical Load	Front 5400PA/back 2400PA

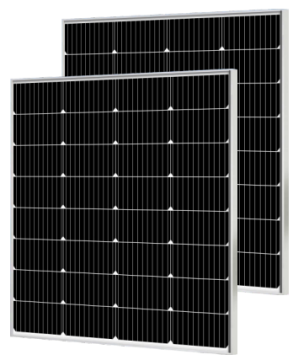
#### Packing

Module Type	SP120M-32
Carton Size	820x780x75mm
Number	2Pcs/Ctn
Weight	15Kg/Ctn
Volume	0.048Cbm/Ctn
20GP Container	1284Pcs
40HQ Container	2280Pcs

- STC: Light intensity 1000W/m<sup>2</sup> Battery temperature 25°C atmosphere quality=15
- NOCT: Light intensity 800W/m<sup>2</sup> Battery temperature 20°C atmosphere quality=15 wind velocity 1m/s

Final explanation rights reserved

### Module Picture



## SP100M-32

Comprehensive Certificates

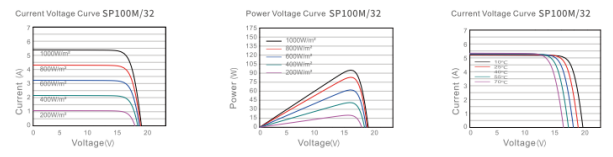
- IEC61215, IEC61730
- ISO9001:2015 Quality management systems
- ISO45001: Environmental management systems
- ISO45001:2018 Occupational health and safety management systems



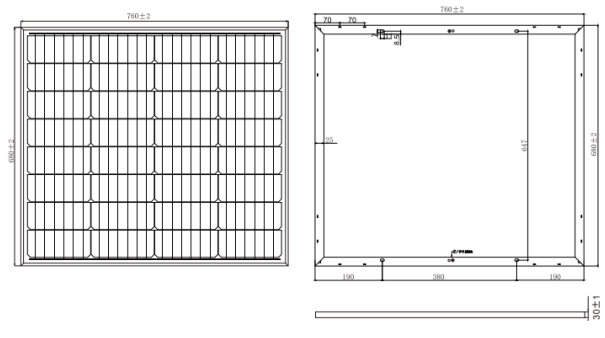
### Electrical Parameters at (STC)

Module	Power (W)	Module Efficiency(%)	Voltage at Pmax(Vmp)	Current at Pmax(Impp)	Open Circuit Voltage(Voc)	Short Circuit Current(Isc)	Power Tolerance(w)
SP100M	100W	19.30%	18.24	5.48	21.80	5.81	±3%

### Characteristics



### Mechanical Diagrams



PS: Frame color and cable length can be customized

Mechanical Parameters	
Solar Cell(Type/Size)	MONO(182mm)
Solar Cells Number	32Pcs(4x8)
Dimension	680x760x30mm
Weight	6.30Kg/Pcs
Tempered Glass	3.2 mm High Permeability Coated
Frame	Anodized aluminum alloy
Junction Box	IP67, 1*bypass diode
Cable	2.0mm <sup>2</sup> , (+)500mm/(-)500mm
Connector	Original MC4/Compatible MC4
Mechanical Load	Front 5400PA/back 2400PA

Packing	
Module Type	SP100M-32
Carton Size	700x780x75mm
Number	2Pcs/Ctn
Weight	13Kg/Ctn
Volume	0.040Cbm/Ctn
20GP Container	1494Pcs
40HQ Container	3366Pcs

STC: ☀️ Light intensity 1000W/m<sup>2</sup>; 🔋 Battery temperature: 25°C; 🌫️ atmosphere quality=15  
 NOCT: ☀️ Light intensity 800W/m<sup>2</sup>; 🔋 Battery temperature: 20°C; 🌫️ atmosphere quality=15; 🌬️ wind velocity 1m/s

Final explanation rights reserved

### Module Picture



## SP080M-32

Comprehensive Certificates

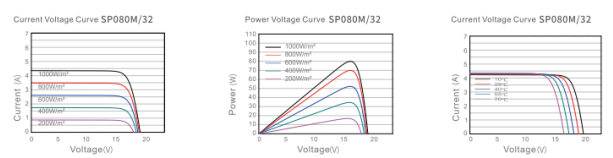
- IEC61215, IEC61730
- ISO9001:2015 Quality management systems
- ISO45001: Environmental management systems
- ISO45001:2018 Occupational health and safety management systems



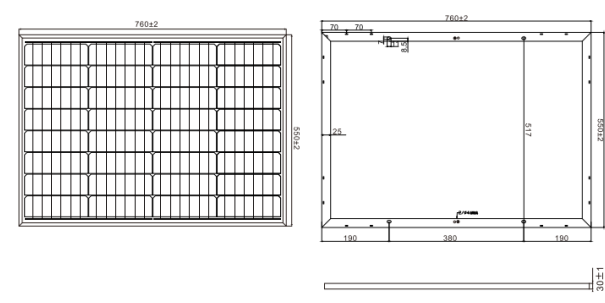
### Electrical Parameters at (STC)

Module	Power (W)	Module Efficiency(%)	Voltage at Pmax(Vmp)	Current at Pmax(Impp)	Open Circuit Voltage(Voc)	Short Circuit Current(Isc)	Power Tolerance(w)
SP080M	80W	19.10%	18.24	4.39	21.80	4.65	±3%

### Characteristics



### Mechanical Diagrams



PS: Frame color and cable length can be customized

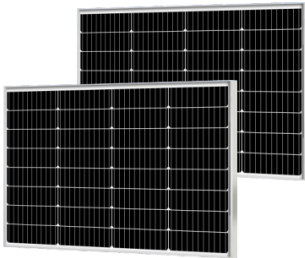
Mechanical Parameters	
Solar Cell(Type/Size)	MONO(182mm)
Solar Cells Number	32Pcs(4x8)
Dimension	550x760x30mm
Weight	5.30Kg/Pcs
Tempered Glass	3.2 mm High Permeability Coated
Frame	Anodized aluminum alloy
Junction Box	IP67, 1*bypass diode
Cable	2.0mm <sup>2</sup> , (+)500mm/(-)500mm
Connector	Original MC4/Compatible MC4
Mechanical Load	Front 5400PA/back 2400PA

Packing	
Module Type	SP080M-32
Carton Size	570x780x75mm
Number	2Pcs/Ctn
Weight	11Kg/Ctn
Volume	0.030Cbm/Ctn
20GP Container	1776Pcs
40HQ Container	4032Pcs

STC: ☀️ Light intensity 1000W/m<sup>2</sup>; 🔋 Battery temperature: 25°C; 🌫️ atmosphere quality=15  
 NOCT: ☀️ Light intensity 800W/m<sup>2</sup>; 🔋 Battery temperature: 20°C; 🌫️ atmosphere quality=15; 🌬️ wind velocity 1m/s

Final explanation rights reserved

### Module Picture



## SP060M-32

### Comprehensive Certificates

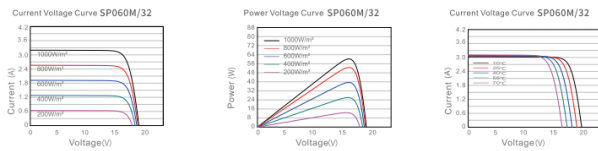
- IEC61215, IEC61730
- ISO9001:2015 Quality management systems
- ISO45001: Environmental management systems
- ISO45001:2018 Occupational health and safety management systems



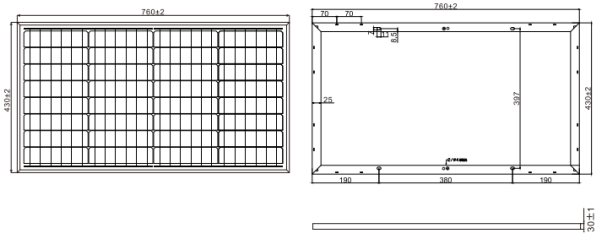
### Electrical Parameters at (STC)

Module	Power (W)	Module Efficiency(%)	Voltage at Pmax(Vmp)	Current at Pmax(Imp)	Open Circuit Voltage(Voc)	Short Circuit Current(Isc)	Power Tolerance(w)
SP060M	60W	18.30%	18.24	3.29	21.80	3.49	±3%

### Characteristics



### Mechanical Diagrams



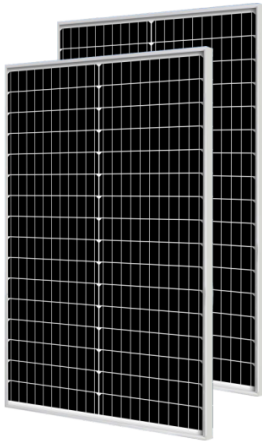
PS: Frame color and cable length can be customized

Mechanical Parameters		Packing	
Solar Cell(Type/Size)	MONO(182mm)	Module Type	SP060M-32
Solar Cells Number	32Pcs(4x8)	Carton Size	450x780x75mm
Dimension	430x780x30mm	Number	2Pcs/Ctn
Weight	4.30Kg/Pcs	Weight	9Kg/Ctn
Tempered Glass	3.2 mm High Permeability Coated	Volume	0.026Cbm/Ctn
Frame	Anodized aluminum alloy	20GP Container	2600Pcs
Junction Box	IP67, 1*bypass diode	40HQ Container	5340Pcs
Cable	2.0mm <sup>2</sup> , (-)500mm/(-)500mm		
Connector	Original MC4/Compatible MC4		
Mechanical Load	Front 5400PA/back 2400PA		

STC: ☀️ Light intensity 1000W/m<sup>2</sup> 🌡️ Battery temperature 25°C 🌫️ atmosphere quality=15  
 NOCT: ☀️ Light intensity 800W/m<sup>2</sup> 🌡️ Battery temperature 20°C 🌫️ atmosphere quality=15 🌪️ wind velocity 1m/s

Final explanation rights reserved

### Module Picture



## SP050M-32

### Comprehensive Certificates

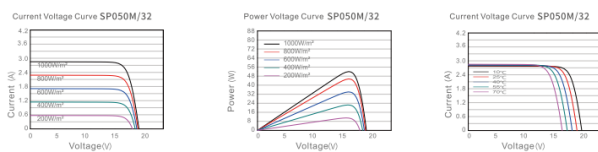
- IEC61215, IEC61730
- ISO9001:2015 Quality management systems
- ISO45001: Environmental management systems
- ISO45001:2018 Occupational health and safety management systems



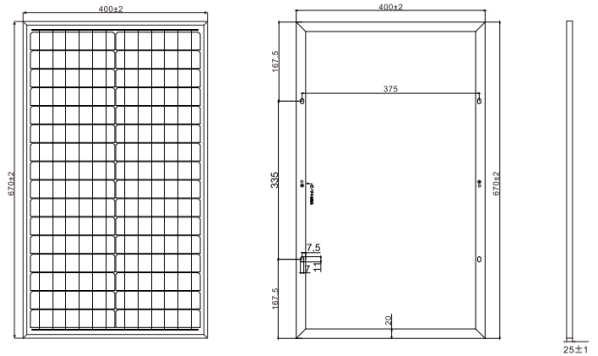
### Electrical Parameters at (STC)

Module	Power (W)	Module Efficiency(%)	Voltage at Pmax(Vmp)	Current at Pmax(Imp)	Open Circuit Voltage(Voc)	Short Circuit Current(Isc)	Power Tolerance(w)
SP050M	50W	18.60%	18.24	2.74	21.80	2.97	±3%

### Characteristics



### Mechanical Diagrams



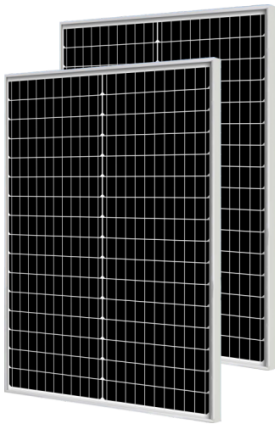
PS: Frame color and cable length can be customized

Mechanical Parameters		Packing	
Solar Cell(Type/Size)	MONO(182mm)	Module Type	SP050M-32
Solar Cells Number	32Pcs(2x16)	Carton Size	780x430x170mm
Dimension	670x400x25mm	Number	5Pcs/Ctn
Weight	3.80Kg/Pcs	Weight	20Kg/Ctn
Tempered Glass	3.2 mm High Permeability Coated	Volume	0.052Cbm/Ctn
Frame	Anodized aluminum alloy	20GP Container	2690Pcs
Junction Box	IP67, 0*bypass diode	40HQ Container	6540Pcs
Cable	//		
Connector	Original MC4/Compatible MC4		
Mechanical Load	Front 5400PA/back 2400PA		

STC: ☀️ Light intensity 1000W/m<sup>2</sup> 🌡️ Battery temperature 25°C 🌫️ atmosphere quality=15  
 NOCT: ☀️ Light intensity 800W/m<sup>2</sup> 🌡️ Battery temperature 20°C 🌫️ atmosphere quality=15 🌪️ wind velocity 1m/s

Final explanation rights reserved

Module Picture



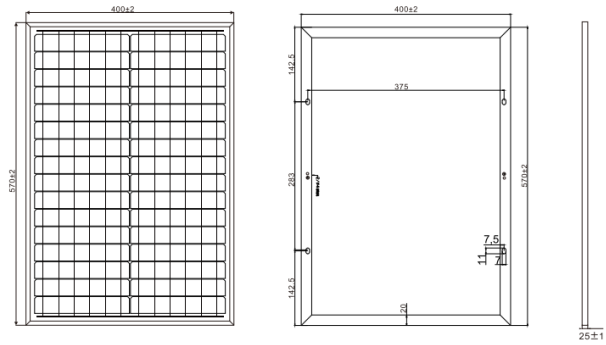
**SP040M-32**

Comprehensive Certificates

- IEC61215, IEC61730
- ISO9001:2015 Quality management systems
- ISO45001: Environmental management systems
- ISO45001:2018 Occupational health and safety management systems



Mechanical Diagrams

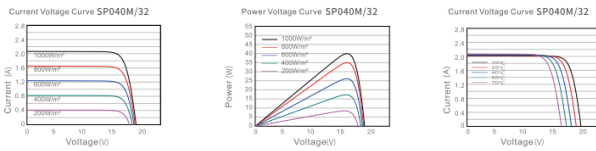


PS: Frame color and cable length can be customized

Electrical Parameters at (STC)

Module	Power (W)	Module Efficiency(%)	Voltage at Pmax(Vmp)	Current at Pmax(Imp)	Open Circuit Voltage(Voc)	Short Circuit Current(Isc)	Power Tolerance(w)
SP040M	40W	17.50%	18.24	2.19	21.80	2.39	±3%

Characteristics



Mechanical Parameters	
Solar Cell(Type/Size)	MONO(182mm)
Solar Cells Number	32Pcs(2x16)
Dimension	570x400x25mm
Weight	2.80Kg/Pcs
Tempered Glass	3.2 mm High Permeability Coated
Frame	Anodized aluminum alloy
Junction Box	IP67, 0* bypass diode
Cable	//
Connector	Original MC4/Compatible MC4
Mechanical Load	Front 5400PA/back 2400PA

Packing	
Module Type	SP040M-32
Carton Size	600x430x170mm
Number	5Pcs/Ctn
Weight	15Kg/Ctn
Volume	0.044Cbm/Ctn
20GP Container	3180Pcs
40HQ Container	7730Pcs

STC: ☀️ Light intensity 1000W/m<sup>2</sup>    🌡️ Battery temperature: 25°C    🌤️ atmosphere quality=15  
 NOCT: ☀️ Light intensity 800W/m<sup>2</sup>    🌡️ Battery temperature: 20°C    🌤️ atmosphere quality=15    🌪️ wind velocity 1m/s

Final explanation rights reserved



## Wind-Solar Hybrid System

### Vertical Energy System Wind Turbine Generator & Solar Panels

### Hybrid Off/ON Grid System With Power Storage

#### DESCRIPTION

Wind Turbine Generator/Outor/Inner rotor Permanent magnet generator

Environmentally friendly

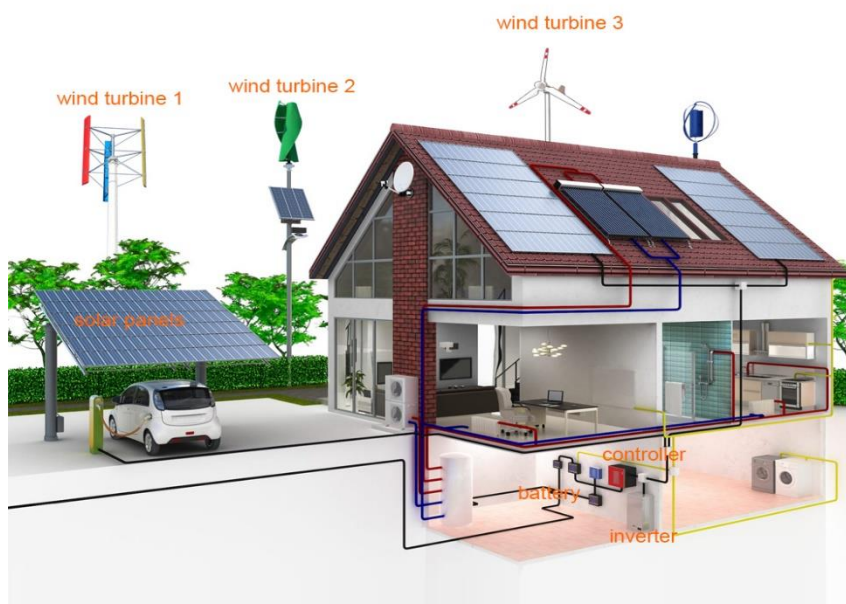
Wind Turbines & Solar Panels Hybrid Energy System

#### Wind Generator

- \*Solar anti-reverse charge, anti-reverse connection protection;
- \*Over-speed, over-wind speed, fan over-voltage, fan over-current protection;
- \* manual brake, automatic brake protection;
- \*Lightning protection, etc.

#### Inverter

- \*Integrated MPPT charge controller.
- \*Equalization charging function.
- \*Work with battery or without battery.
- \*Maximum PV input voltage up to 450VDC.
- \*Configurable grid or solar input priority.
- \*Optional WIFI/ GPRS remote monitoring
- \*5kW,Support parallel operation for capacity expansion up to 30kW.
- \*PV and Grid power the load jointly if PV energy insufficient.
- \*Flexibly schedule the Inverter charging and discharging time.



# Installation Guide



1



2



3



4



5



6



7



8



**SH type wind turbine**

High efficiency  
 Aluminum alloy with zinc coating  
 1kw - 60kw power range  
 Color & logo customized  
 One-stop shopping



**SX type wind turbine**

Beautiful design  
 Glass fiber material  
 1KW - 15KW power range  
 Color & logo customized  
 One-stop shopping



**SS Helix wind turbine**

Beautiful design  
 Glass Fiber material  
 600W - 2000W power range  
 Color & logo customized  
 One-stop shopping



**SL type wind turbines**

High efficiency  
 Glass fiber material  
 1kw - 5kw power range  
 Color & logo customized  
 One-stop shopping



**SK Type wind turbine**

High efficiency  
 Glass fiber material  
 1kw - 30kw power range  
 Color & logo customized  
 One-stop shopping



**SD Type wind turbine**

High efficiency  
 Glass fiber material  
 30kw - 650kw power range  
 Color & logo customized  
 One-stop shopping



## Horizontal Energy System Wind Turbine Generator & Solar Panels Hybrid Off/ON Grid System With Power Storage

### DESCRIPTION

High-quality alloy steel body, using high-quality FRP blades, enhanced anti-corrosion performance, both beautiful and durable

Low start-up wind speed, beautiful appearance and low vibration during operation

High-power tracking intelligent microprocessor control is adopted to effectively adjust the current and voltage

### Wind Generator Features:

1. Rare earth permanent-magnet generator
  2. Small vibration and tiny friction, stable rotation in higher speed
  3. Streamlined wind turbine body and blade outline design
  4. Blades have 2 kinds, 300w-1kw for high-rigidity FRP materials and blades are dynamic-balanced
  5. Noise level below 55dB around the wind turbine tower
  6. State of the art, workmanship and beautiful appearance
  7. Use magnetic saturation technology, with 20years designed life;
  8. Select high quality bearing, free to maintenance;
  9. Anti-twist device, generator can whirl in each direction
  10. Anti strong wind, the blade protect itself automatically,
  11. Applications for Household, Farm, Marine, Boat, Street Lights, Home, Opening Plaza lighting etc.
  11. Supply matched controller/inverter(optional), make solar and wind energy system more stable.
  12. At night or on rainy day, wind turbine generate wind power. On sunny day, solar panel generate solar power.
- On windy and sunny days, both solar and win

Place of Origin:	China	Use:	Home
Solar panel type:	Monocrystalline Silicon	Type of battery:	Lithium Ion
Controller type:	Pwm, Mppt	Installation method:	Roof Mounting, Ground Mounting
Wind turbine type	horizontal	Input voltage	24v
Output voltage	220v	Wind turbine rated power:	2kw

A wind turbine is a device that converts the wind's kinetic energy into electrical energy. Wind was shown to have the "lowest relative greenhouse gas emissions, the least water consumption demands and... the most favourable social impacts" compared to photovoltaic, hydro, geothermal, coal and gas. So the application of wind turbines is more and more widely.

Our 500W Wind Turbine Generator TY-wind turbine is durable, low maintenance and the most powerful wind turbine in our line up of wind turbine having weighing at only 35 lbs. The included Digital MPPT Charge Controller of the 500W wind turbine is specially configured to generate the MAX power output and to



incorporate its safety protocols such as automatic braking and over charging the batteries. Coated with special high weather tolerant protection spray to protect the wind turbine from the elements such as rain. It is a completely self-sustaining stand-alone device that will continuously generates 100% clean GREEN renewable energy, without being present or around it.





# Micro Inverter

## On-Grid Inverter GTB Series

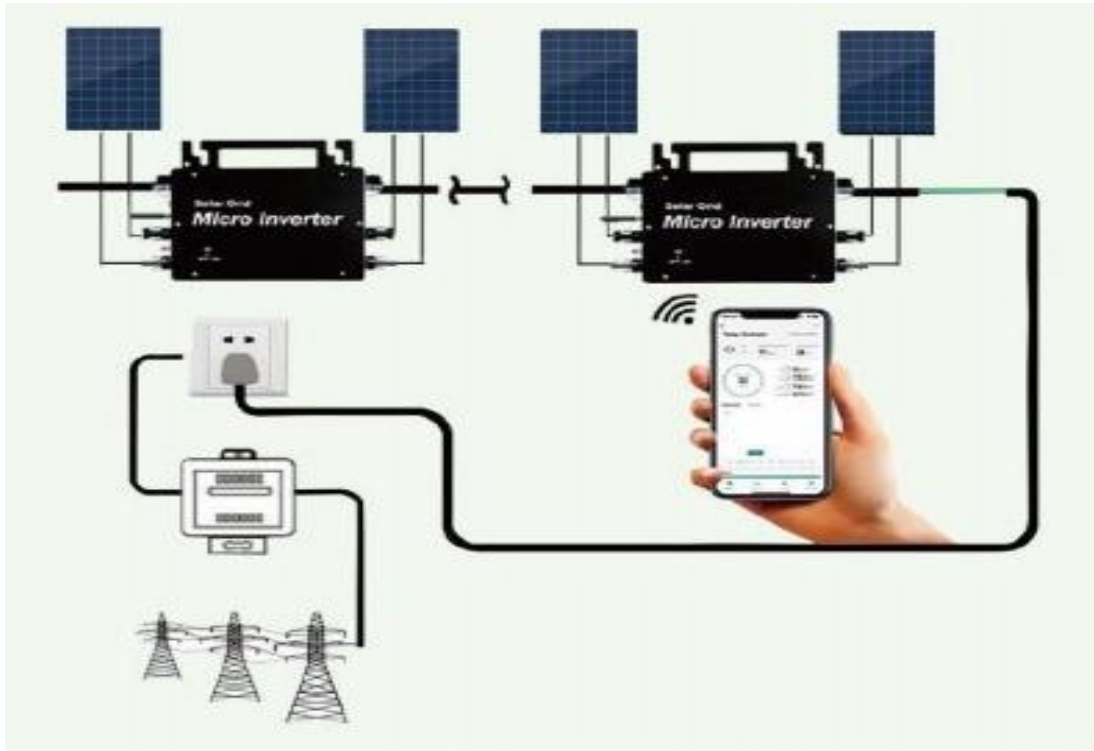
(Equipped with mobile phone monitoring, free of MODEM external installation)

Product	Type	Parameter
	GTB-400	DC input: 22-50VDC AC output: 110/230VAC Output power: 400W Size: 20 * 18.5 * 4cm Net weight: 0.9KG Gross weight: 1.45KG Single unit packaging: 24.5 * 20 * 10cm Full box packaging: 51 * 33 * 23cm(14kg) Packaging quantity: 10 units
	GTB-600	DC input: 22-50VDC AC output: 110/230VAC Output power: 600W Size: 29 * 20 * 4cm Net weight: 1.7KG    Gross weight: 2.3KG Single unit packaging: 34.5 * 24 * 10cm Full box package: 51*38*22.5cm(14KG)

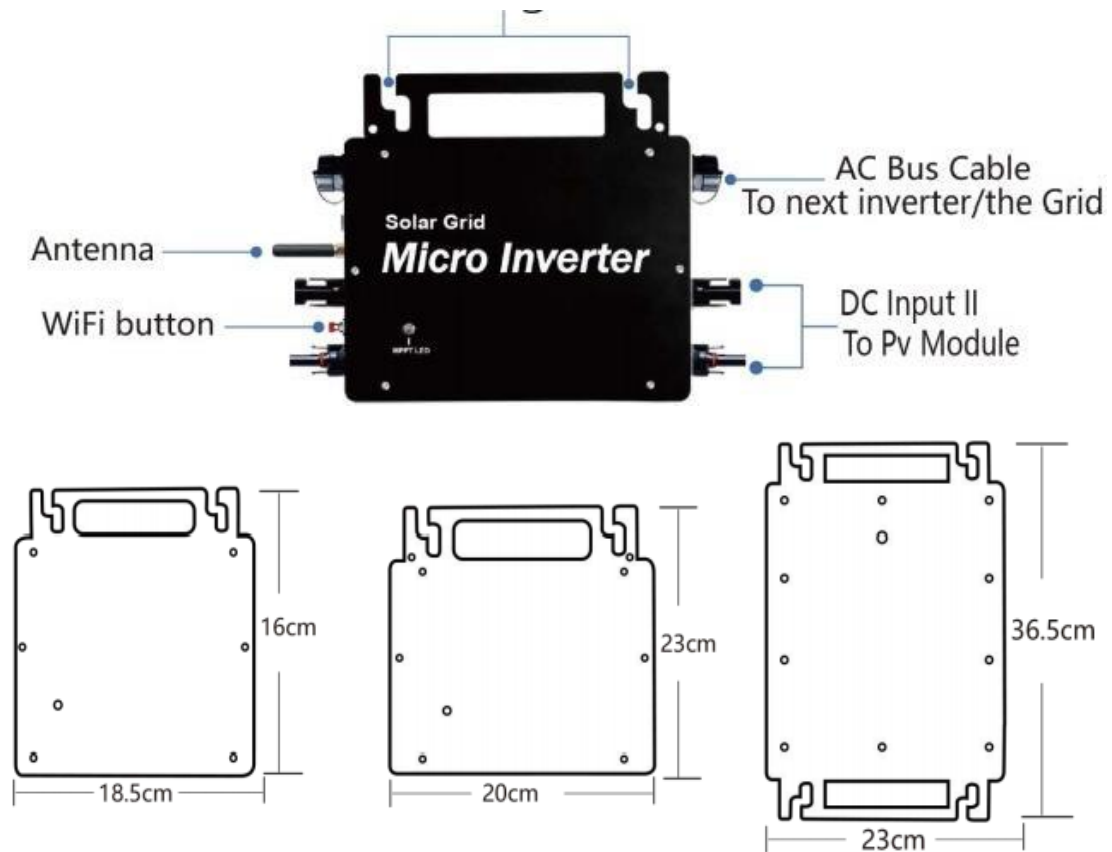
		<p><b>Packaging quantity: 5 units</b></p>
	<p><b>GTB-800</b></p>	<p><b>DC input: 22-50VDC</b>  <b>AC output: 110/230VAC</b>  <b>Output power: 800W</b>  <b>Size: 31 * 20 * 4cm</b>  <b>Net weight: 1.8KG</b>  <b>Gross weight: 2.5KG</b>  <b>Single unit packaging: 34.5 * 24 * 10cm</b>  <b>Full box packaging: 51 * 38 * 22.5cm (14KG)</b>  <b>Packaging quantity: 5 units</b></p>
	<p><b>GTB-1600</b></p>	<p><b>DC input: 22-50VDC</b>  <b>AC output: 110/230VAC</b>  <b>Output power: 1400W</b>  <b>Size: 37 * 30 * 4cm</b>  <b>Net weight: 2.8KG</b>  <b>Gross weight: 3.9KG</b>  <b>Single unit packaging: 43 * 37.5 * 11.5cm</b>  <b>Full box packaging: 44*40*27cm 15.8KG</b>  <b>Packaging quantity: 4 units</b></p>

	<p><b>GTB-1200</b></p> <p>DC input: 22-50VDC</p> <p>AC output: 110/230VAC</p> <p>Output power: 1200W</p> <p>Size: 37 * 30 * 4cm</p> <p>Net weight: 2.75KG</p> <p>Gross weight: 3.9KG</p> <p>Single unit packaging: 43 * 37.5 * 11.5cm</p> <p>Full box packaging: 44 * 40 * 27cm (15.8KG)</p> <p>Packaging quantity: 4 units</p>
	<p><b>GTB-1400</b></p> <p>DC input: 22-50VDC</p> <p>AC output: 110/230VAC</p> <p>Output power: 1400W</p> <p>Size: 37 * 30 * 4cm</p> <p>Net weight: 2.8KG</p> <p>Gross weight: 3.9KG</p> <p>Single unit packaging: 43 * 37.5 * 11.5cm</p> <p>Full box packaging: 44 * 40 * 27cm (15.8KG)</p> <p>Packaging quantity: 4 units</p>

## Basic Structure



## Mounting Holes



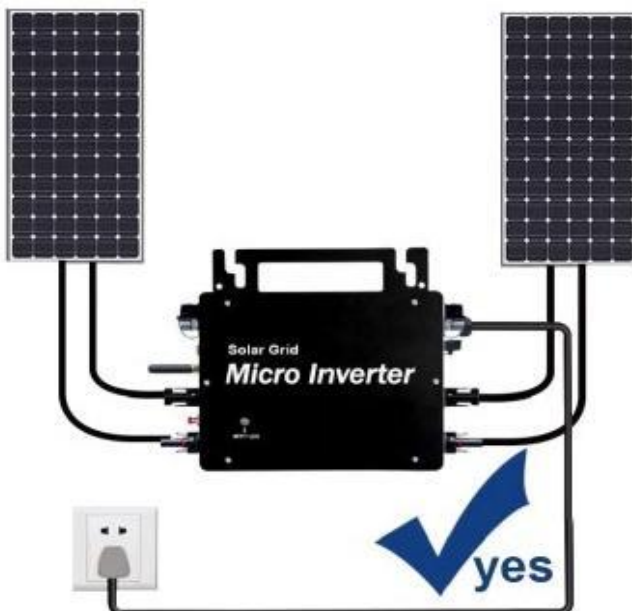
## Connection Diagram

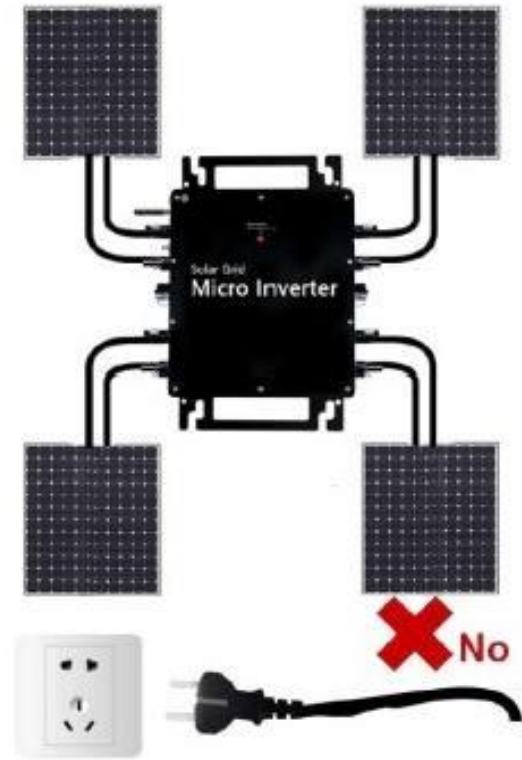


Normal working conditions of the inverter: the 22-50V

DC voltage of the solar panel must be connected, and the AC voltage must be connected at the same time, and the indicator light is green.

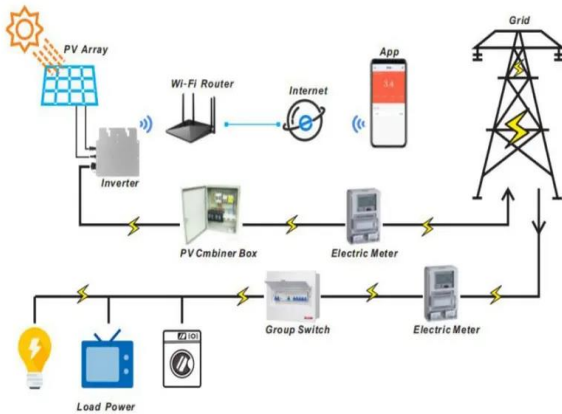
Only the solar panel is connected. When the mains AC is not connected, the red light on the inverter surface is on, and the instrument and machine do not work normally.





## Application Scenario

### Wiring



## Wide Usage

It is suitable for various household appliances. It can convert the DC power generated by solar panels into AC power available for household appliances.





# Product Catalog

## EV Chargers



### Q8 - Wallbox-Type1 / Type2 / GB-T



Mode 3: Charging Station with a 5M Type2 cable (4.3 inch)

Mode 3: Charging Station with a 5M Type2 cable(LED)

Model:

Q8-AC-02-US(32a phase)

Q8-AC-02-UR(32a phase)

Q8-AC-02-GB-T(21kw / 11kw / 7kw)

Model:

Q8-AC-02-US(32a phase)

Q8-AC-02-UR(32a phase)

Q8-AC-02-GB-T(21kw / 11kw / 7kw)

#### Input & Output

Power rating	7KW(1 Phase) / 11 KW(3 Phase)
Charging interface type	Type1 / Type2 / GB-T
Input & Output voltage	AC220V±10%(1 Phase) / AC380V±10%(3 Phase)
Output current	16A/32A
Frequency	45-65HZ

#### Protection

Overvoltage protection	✓
Undervoltage protection	✓
Overload protection	✓
Short circuit protection	✓
Ground protection	✓
Over temperature protection	✓
Lightning protection	✓
Leakage protection	✓
Flame retardant protection	✓

#### Function and Accessory

WiFi/4G/OCPP1.6/LAN	Optional
RFID(2 user cards)	Optional
RCD	Type A / type A+6mA DC
4.3 inch display	Optional
LED Indicator light	✓
Home load balancing(DLB)	Optional

#### Working environment

IP grade	≥IP65
Working temperature	-40-+65°C
Working altitude	<2000m
Working Humidity	5%-95% no condensation
Cooling mode	Natural cooling
MTBF	≥100000H
Special protection	UV resistance
Standby power	3W/5W(With LCD)



LCD Material:PC+ABS LED Light RFID WIFI/4G/LAN Type1 Type2 TypeGB/T

## Q6 - Wallbox-Type1 / Type2 / GB-T



**Mode 3: Charging Station with a 5M Type2 cable(LED)**

Model:  
Q6-AC-03-US(32a phase)  
Q6-AC-03-UR(32a phase)  
Q6-AC-03-GB-T(21kw/11kw/7kw)

**Mode 3: Charging Station with a 5M Type2 cable(4.3 inch)**

Model:  
Q6-AC-03-US(32a phase)  
Q6-AC-03-UR(32a phase)  
Q6-AC-03-GB-T(21kw/11kw/7kw)

**Mode 3: Charging Station with a 5M Type2 cable(7 inch)**

Model:  
Q6-AC-03-US(32a phase)  
Q6-AC-03-UR(32a phase)  
Q6-AC-03-GB-T(21kw/11kw/7kw)



### Input & Output

Power rating	7KW(1 Phase) / 11 KW(3 Phase)
Charging interface type	Type1 / Type2 / GB-T
Input & Output voltage	AC220V±10%(1 Phase) / AC380V±10%(3 Phase)
Output current	16A/32A
Frequency	45-65HZ

### Protection

Overvoltage protection	✓
Undervoltage protection	✓
Overload protection	✓
Short circuit protection	✓
Ground protection	✓
Over temperature protection	✓
Lightning protection	✓
Leakage protection	✓
Flame retardant protection	✓

### Function and Accessory

WIFI/4G/OCPP1.6/LAN	Optional
RFID(2 user cards)	Optional
RCD	Type A / type A+6mA DC
4.3 inch display	Optional
LED Indicator light	✓
Home load balancing(DLB)	Optional

### Working environment

IP grade	≥IP65
Working temperature	-40~+65°C
Working altitude	<2000m
Working Humidity	5%-95% no condensation
Cooling mode	Natural cooling
MTBF	≥100000H
Special protection	UV resistance
Standby power	3W/5W(With LCD)

Song Solar/ Renewable Energy Provider for Better Living

## Q5 - Wallbox-Type1 / Type2 / GB-T



**Mode 3: Charging Station with a 5M Type2 cable(LED)**

Model:  
Q5-AC-01-US(32a phase)  
Q5-AC-01-UR(32a phase)  
Q5-AC-01-GB-T(21kw/11kw/7kw)

**Mode 3: Charging Station with a 5M Type2 cable(fingerprint)**

Model:  
Q5-AC-01-US(32a phase)  
Q5-AC-01-UR(32a phase)  
Q5-AC-01-GB-T(21kw/11kw/7kw)

### Input & Output

Power rating	7KW(1 Phase) / 11 KW(3 Phase)
Charging interface type	Type1 / Type2 / GB-T
Input & Output voltage	AC220V±10%(1 Phase) / AC380V±10%(3 Phase)
Output current	16A/32A
Frequency	45-65HZ

### Protection

Overvoltage protection	✓
Undervoltage protection	✓
Overload protection	✓
Short circuit protection	✓
Ground protection	✓
Over temperature protection	✓
Lightning protection	✓
Leakage protection	✓
Flame retardant protection	✓

### Function and Accessory

WIFI/4G/OCPP1.6/LAN	Optional
RFID(2 user cards)	Optional
RCD	Type A / type A+6mA DC
4.3 inch display	Optional
LED Indicator light	✓
Home load balancing(DLB)	Optional

### Working environment

IP grade	≥IP65
Working temperature	-40~+65°C
Working altitude	<2000m
Working Humidity	5%-95% no condensation
Cooling mode	Natural cooling
MTBF	≥100000H
Special protection	UV resistance
Standby power	3W/5W(With LCD)

Song Solar/ Renewable Energy Provider for Better Living